

Monthly PAX Trends Snapshot

FEB 2014



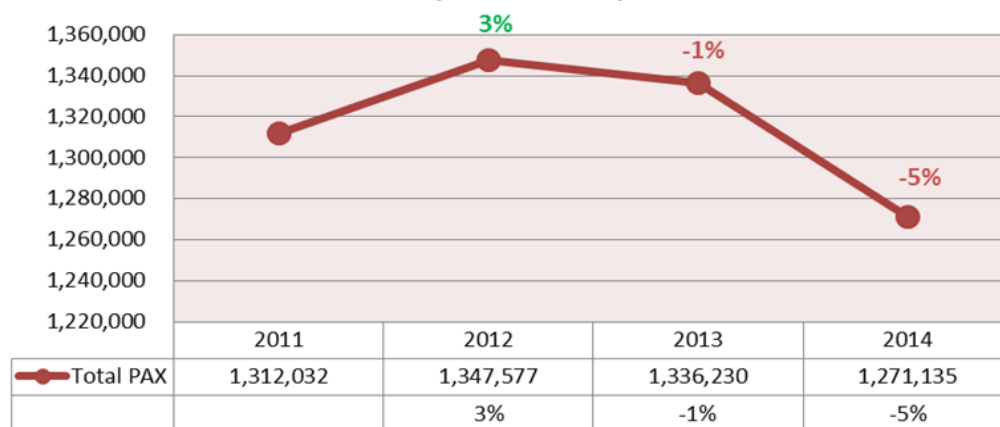
شركة مطار البحرين
bahrain airport company

Snapshots will be sent to our readers on a monthly basis.

Our aim is to constantly keep you updated and informed on key passenger data, trends and highlights for the concerned month.

We hope you find our Snapshots informative as we continue to improve and enhance its content.

(Jan-Feb) Cumulative Y-O-Y Total PAX
(2011-2014)



Source: Traffic Movement Sheet, BAS; compilation and analysis by Commercial and Marketing, BAC.

- ✈ February 2014 Total PAX amounted to 592,123.
- ✈ 2013-2014 (Jan-Feb) Total PAX witnessed a decline of 5% (or 65,095).
- ✈ There appears to be a cumulative decline in February 2014, but that is only due to the fact that Gulf Air's restructuring and Bahrain Air's closure occurred during February 2013; therefore, the figures for January 2013 elevate the Jan-Feb 2013 cumulative total in comparison to 2014. However, the cumulative decline is decreasing in this respect, as apparent during the previous month when the decline was almost double at 11% (or 87,323). It is expected that this gap will narrow moving forward.
- ✈ It is also worth noting that February is considered to be a low-season and that traffic at BIA tends to slow down.

2013-2014 Total PAX witnessed an increase of 4% (or 22,228).

The main highlights of the month were:

MHD: +9,001 in Total PAX:

- Disembarking: up 6,344.
- Joining: up 2,657.
- There were no flights to MHD during the same period last year. Mahan Air and Gulf Air competed heavily on this route, followed by Iran Air with a large gap.

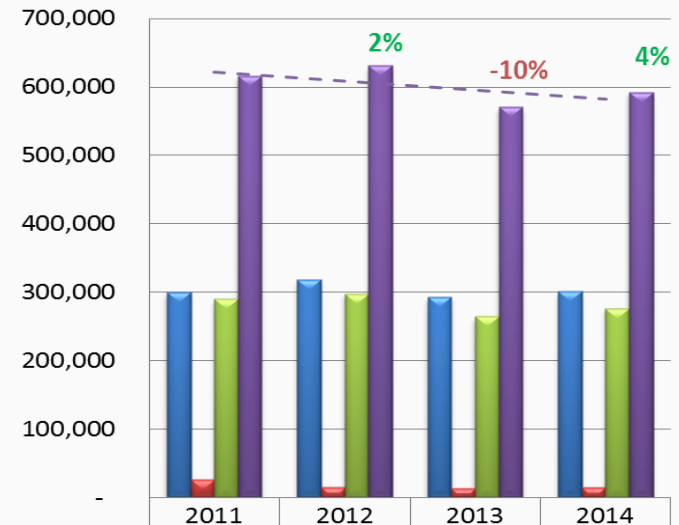
JED: +49% (or 8,515) in Total PAX:

- Disembarking: up 57% (or 4,691).
- Joining: up 41% (or 3,824).
- Gulf Air claimed the lion's share of the increase.

IAD: -53% (or 3,971) in Total PAX:

- Disembarking: down 52% (or 2,037).
- Joining: down 55% (or 1,934).
- United Airlines' reduction of weekly frequencies from 7 to 4 has affected its PAX traffic.

Feb PAX Trends (2011-2014)



Disembarking	299,633	317,551	292,255	300,926
Transit	26,530	15,258	13,381	14,593
Joining	290,022	297,694	264,259	276,604
Total	616,185	630,503	569,895	592,123

Top 10 Airports Rank Displacement (Jan-Feb):

# Airport	2014 Vs. 2013
1 DXB	-
2 DOH	-
3 KWI	-
4 AUH	-
5 MCT	-
6 JED	8
7 BOM	1
8 RUH	(2)
9 LHR	-
10 DMM	(3)

Top 10 Airports Growth/Decline (FEB 2013-2014):

Rank	Airport	Total PAX	Airport	Total PAX
1	MHD	9,001	IAD	(3,971)
2	JED	8,515	DXB	(3,668)
3	KWI	5,592	BGW	(2,203)
4	DOH	4,350	DMM	(1,427)
5	TRV	3,961	COK	(1,129)
6	KHI	3,656	HKG	(929)
7	LHE	3,242	MNL	(847)
8	PEW	2,632	BKK	(789)
9	ISB	2,291	SHJ	(693)
10	SKT	2,152	ADD	(627)